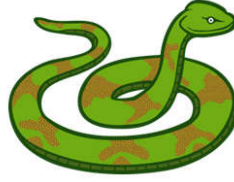
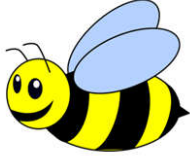


İsminde "ı" sesi bulunan nesnelere işaretleyelim.



Aşağıdaki varlıkların isminde geçen "ı" harflerini işaretleyelim.



ışık



mısır



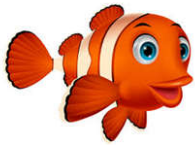
pirasa



ayı



altı



balık



tırtıl



findık

İsminde "ı" sesi başta mı ortada mı sonda mı?





Handwriting practice section for the letter 'I'. It consists of four rows of handwriting lines (top blue, middle dashed red, bottom blue). The first row contains eight dashed 'I' characters for tracing. The second and third rows also contain eight dashed 'I' characters for tracing. The fourth row is empty, providing space for independent practice.



Handwriting practice section for the letter 'I'. It consists of four rows of handwriting lines (top blue, middle dashed red, bottom blue). The first row contains eight dashed 'I' characters for tracing. The second and third rows also contain eight dashed 'I' characters for tracing. The fourth row is empty, providing space for independent practice.