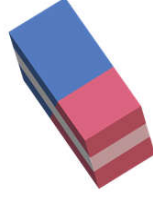


İsminde "s" sesi bulunan nesnelere işaretleyelim.



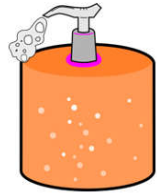
Aşağıdaki varlıkların isminde geçen "s" harflerini işaretleyelim.



sarımsak



sucuk



sabun



giysi



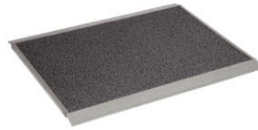
resim



fıstık



yastık

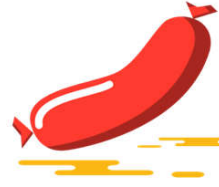


paspas

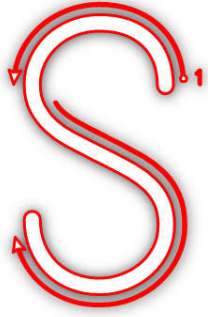
İsminde "s" sesi başta mı ortada mı sonda mı?



Aşağıdaki görsellerdeki varlıkların adını yazalım.



S



S

s



s

s s s s

S S S S

S S S S

S S S S

s s s s

s s s s

s s s s

s s s s